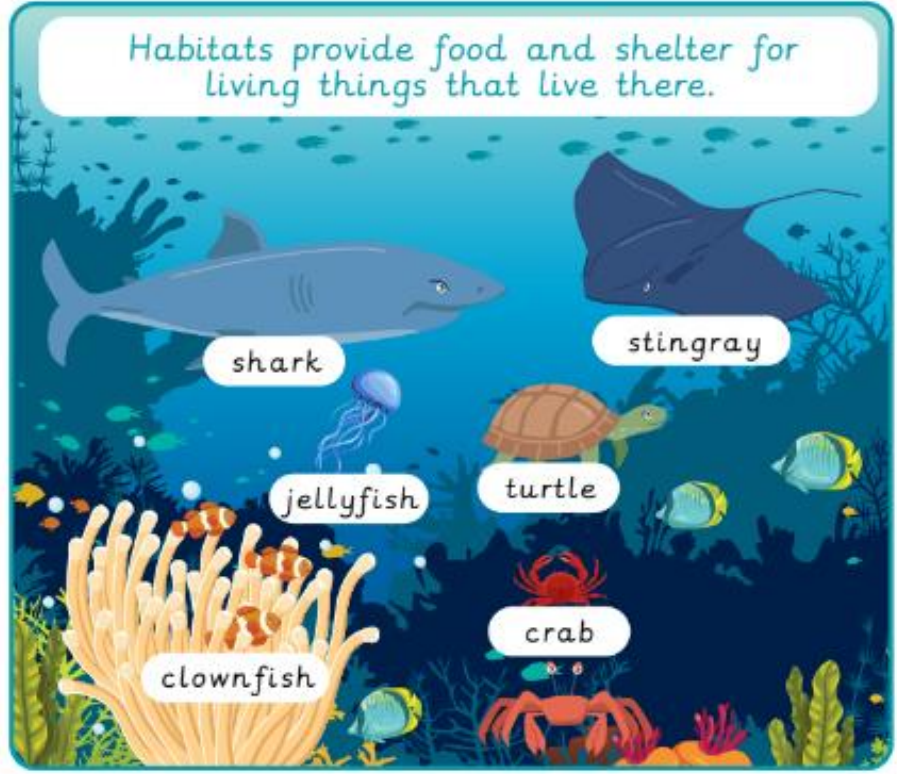




Year 2
Knowledge Organisers
Science



A woodland food chain



nettle



caterpillar



blue tit

KSI - Microhabitats

A **microhabitat** is a small area with different conditions to the surrounding area.



under logs and stones



grass



leaf litter



soil

Minibeasts are small creatures without a backbone.

woodlouse



ladybird



snail



worm

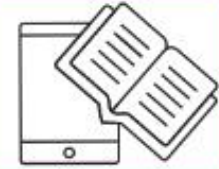


Minibeasts live in microhabitats that provide them with **food** and **shelter**.

Scientists use **super science skills** to find answers to questions.

Super science skills

Researching



Observing over time



Comparative and fair testing



Grouping



Spotting patterns



Knowledge organiser - Uses of everyday materials

Materials have properties that suit the uses of many different objects.



Metal is waterproof, strong and stiff.

Objects are often made from different materials.



metal

wood

plastic

Some solid objects are made from materials that can change shape.



stretch



twist



bend



squash

material

What objects are made from.

property

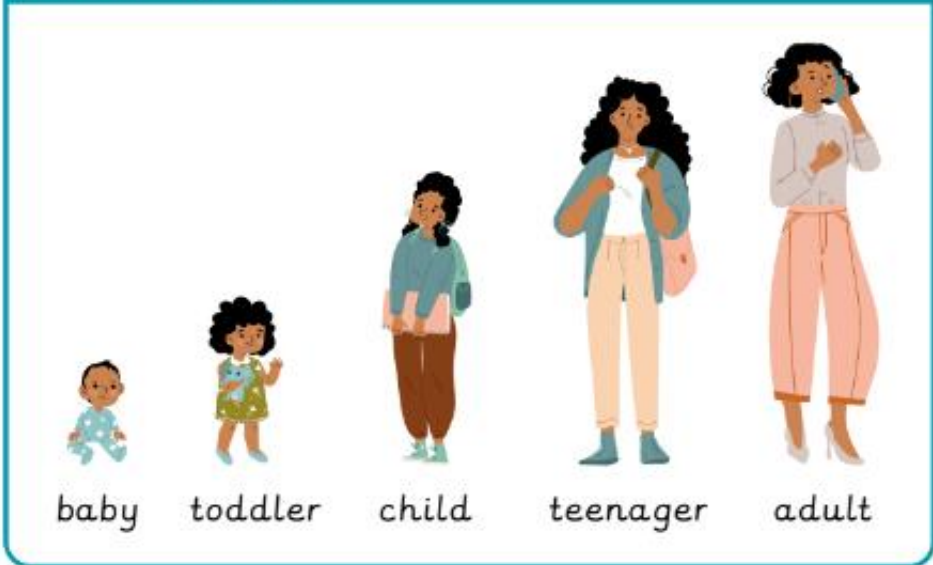
How a material is described.

suitable

The best choice.

Science - Life cycles and health

Human life cycle



baby

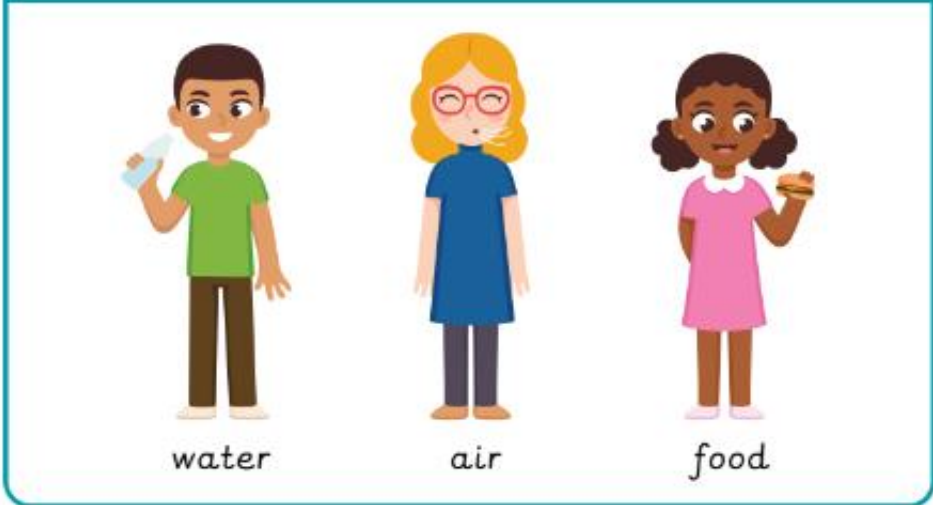
toddler

child

teenager

adult

Basic needs for survival



water

air

food

Personal hygiene



health	How the body feels.
hygiene	Keeping things clean.
life cycle	The stages an animal goes through to become an adult.
offspring	Young animals or plants produced by parents.
survive	To continue to live.

leaves	They use light to make food for the plant.
roots	They take up water and nutrients from the soil.
flowers	They make seeds so new plants can grow.

- Seeds contain a store of **energy**.
- **Germination** is when a new plant starts to grow.
- A seed needs **water** and **warmth** to germinate.



The shoot is the first green part of a plant to grow from a seed.

Bulbs

Rounded roots from which new plants can grow.



What do plants need for healthy growth?



water



light



warmth

Plant life cycle

